

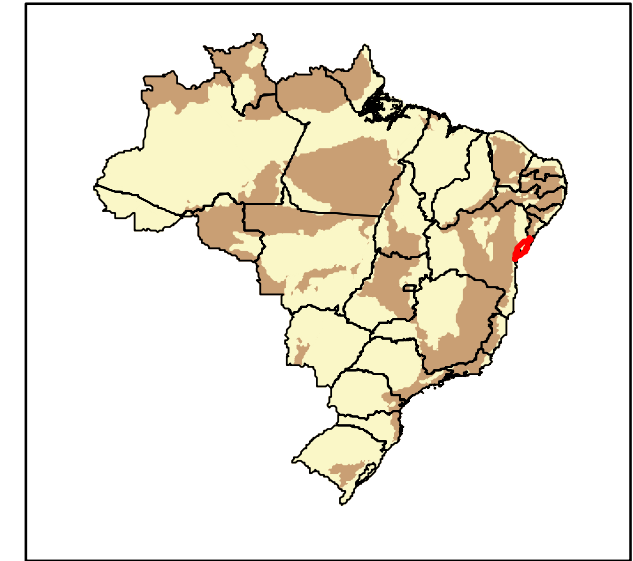
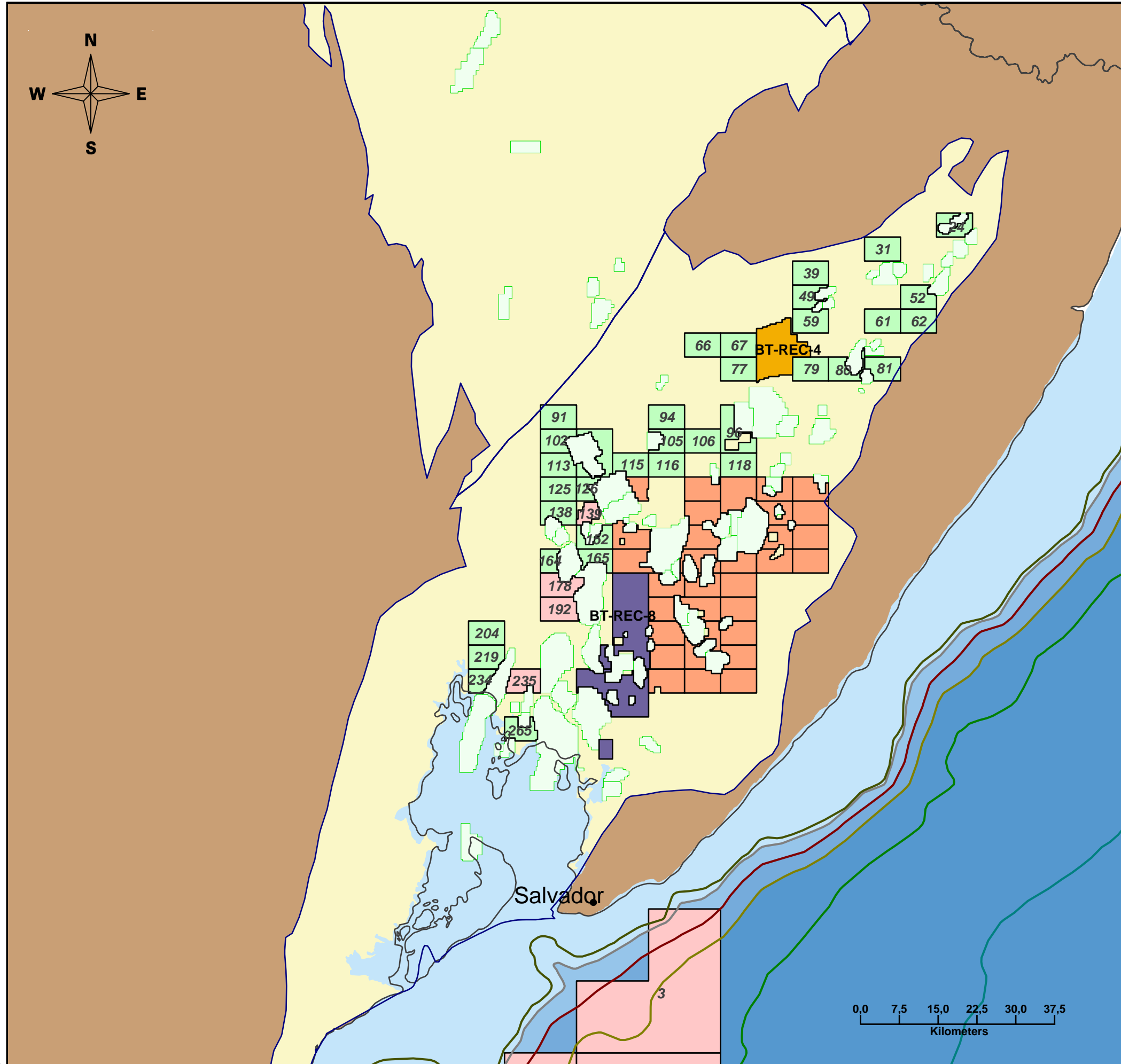
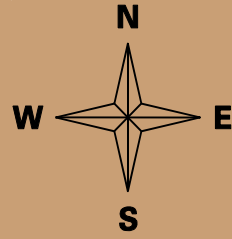
# Bacia do Recôncavo e Tucano Sul

-39°29'20"

-37°32'54"

-11°25'36"

-11°25'36"



**Campos de Desenvolvimento ou Produção**  
Fields under Development or Production

**Blocos Exploratórios sob Concessão**  
Exploratory Blocks under Concession

- Rodada 0 - Round 0
- Rodada 1 - Round 1
- Rodada 2 - Round 2
- Rodada 3 - Round 3
- Rodada 4 - Round 4
- Rodada 5 - Round 5
- Rodada 6 - Round 6
- Rodada 7 - Round 7
- Rodada 9 - Round 9

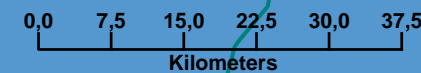
Batimetria / Bathymetry	
	< -100 m
	-100 m a -400 m
	-400 m a -1000 m
	> -1000 m

Bacias Sedimentares  
Sedimentary Terrains

Embasamento  
Igneous and Metamorphic Terrains

[www.Brasil-Rounds.gov.br](http://www.Brasil-Rounds.gov.br)

Atualizado - Updated 06/03/2008



-13°16'33"

-39°29'20"

-13°16'33"

-37°32'54"